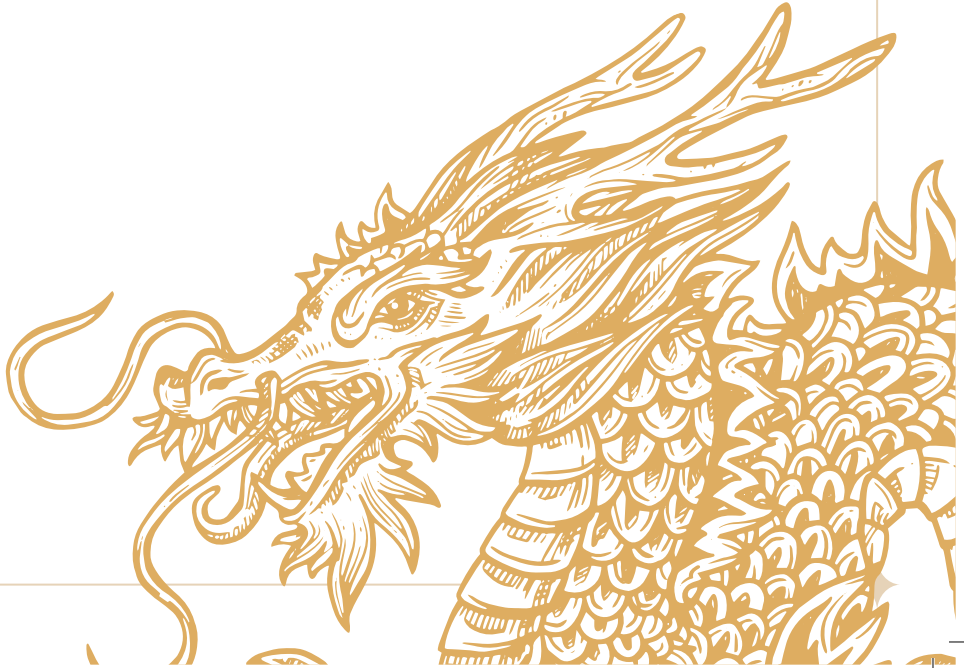


LUNCH SERVED FROM: 12 PM - 3 PM

Hustlers^{SYD}

DINNER SERVED FROM: 5 PM - LATE





**S
M
A
L
L

S
H
A
R
I
N
G**

| | |
|--|-----------------------|
| PACIFIC OYSTER (GF) eschalot yuzu ponzu dill | 7 EA / 38 / 72 |
| TORCHED HOKKAIDO SCALLOP (*) green sauce peanuts shallot relish (min. 2) | 9 EA |
| PRAWN TOAST sesame seeds garlic mayo salmon roe (min. 2) | 11 EA |
| JACK'S CREEK MB3+ BEEF INTERCOSTAL SKEWER hoisin tare togarashi (min. 2) | 13 EA |
| LAMB TOMAHAWK (GF) adobo gravy caramelised onions herbs | 18 EA |
| MB8+ WAGYU BEEF TARTARE (GF) wonton chips grated cured egg yolk yukhoe sauce | 26 |
| KINGFISH CEVICHE (GF) coconut cream nước mắm fried eschalot shallot oil | 28 |
| CHINESE BURRATA (V) mapo shiitake shallot you tiao | 26 |
| KOREAN LINGUINE (V) creamy gochujang shimeji mushroom manchego | 20 |



LARGE SHARING

HUSTLER'S STEAK FRITES (GF) 69
MB5+ Sirloin 250g | Vietnamese mint chimichurri
| shrimp butter | fries

SHANTUNG FRIED CHICKEN (GF) H 33 / WH 59
chilli black vinegar soy | shallot relish

STEAMED BREAM FILLET 32
soy | ginger shallot relish

BONE MARROW INDOMIE 29
garlic oil | fried egg

GARLIC FRIED RICE (GF) 26
furikake | bonito soy | prawns



SIDES

GRILLED CAULIFLOWER (GF)(V) 18
garlic soy vinaigrette | labneh | toasted
sunflower seeds | basil oil

TRUFFLE MISO BROCCOLINI (GF)(V)(VG)(*) 19
roasted almonds | togarashi

WOK FRIED EGGPLANT (GF)(*) 17
sweet oyster sauce soy | sesame seeds | fried
shallot crumb | crushed peanuts

FRIES (GF) 13
house furikake | garlic aioli

JASMINE RICE (GF) S4 / L6



DESSERT

| | |
|--|-----------|
| COMPRESSED WATERMELON (GF)(V) | 16 |
| strawberry gelato lychee granita candied sunflower seeds | |
| CHOCOLATE CREMEUX (V)(*) | 16 |
| red miso butterscotch macadamia toasted coconut brown butter crumb | |
| DESSERT WINE | 16 |
| three bridges botrytis sémillon (riverina, nsw) | |

SET MENU (\$80pp)

BEEF TARTARE (GF)
BONE MARROW INDOMIE
MB3+ BEEF INTERCOSTAL SKEWER 1PP
TRUFFLE MISO BROCCOLINI (GF)
STEAMED BREAM
GARLIC FRIED RICE (GF)
COMPRESSED WATERMELON (GF)(V)

SET MENU IS COMPULSORY FOR
GROUPS OF 8 OR MORE

SET MENU (\$55pp)

KING FISH CEVICHE (GF)
PRAWN TOAST 1PP
LAMB TOMAHAWK (GF) 1PP
GRILLED CAULIFLOWER (GF)(V)
CHOCOLATE CREMEUX (V)(*)

MINIMUM 2 PERSONS
MAXIMUM 7 PERSONS

CARD TRANSACTIONS MAY INCUR A SURCHARGE. 10% SURCHARGE ON TABLES
OF 6 OR MORE. 15% SURCHARGE ON PUBLIC HOLIDAYS